

# Garrán Ferney

CARRIGALINE

A development by



[www.dwellings.ie](http://www.dwellings.ie)

**Dwellings  
are delighted  
to introduce  
Garrán Ferney,  
an exclusive  
development of  
just 49 new three  
and four bedroom  
A-rated homes in  
the bustling and  
welcoming village  
of Carrigaline in  
Co. Cork.**







Designed to meet the demands of modern living, the houses offer well-thought-out accommodation and a very generous amount of both private and open space. The landscaping and natural setting will further enhance the rural setting.

Garrán Ferney offers a niche lifestyle, ideal for both young families and busy professionals, whether trading up or down.







These homes are practical and elegant as well as being highly energy efficient.

They are spacious homes designed for your life; whether that's playing with your kids, entertaining friends, chilling on the couch or working from home, you can do it all in a bright, comfortable and relaxing environment.









Our generous and stylish kitchens are designed to make the best use of the most popular room in the house.

There is ample room for cooking, dining and everyday family life. Large patio doors allow natural light to flood the room and let you enjoy your garden whatever the occasion.







These high-quality superbly designed homes offer plenty of scope for you to create living spaces to suit your own needs.

Clever use of space, high-quality materials and excellent finishes – from floor to ceiling – all play a vital part in making these warm, light-filled and generous spaces homes that will be a pleasure to live in.











Creative design, the right materials and clever touches like generous storage areas all combine to make warm inviting bedrooms and equally luxurious bathrooms.

These rooms make the perfect sanctuary for unwinding and sleeping at the end of a long day.

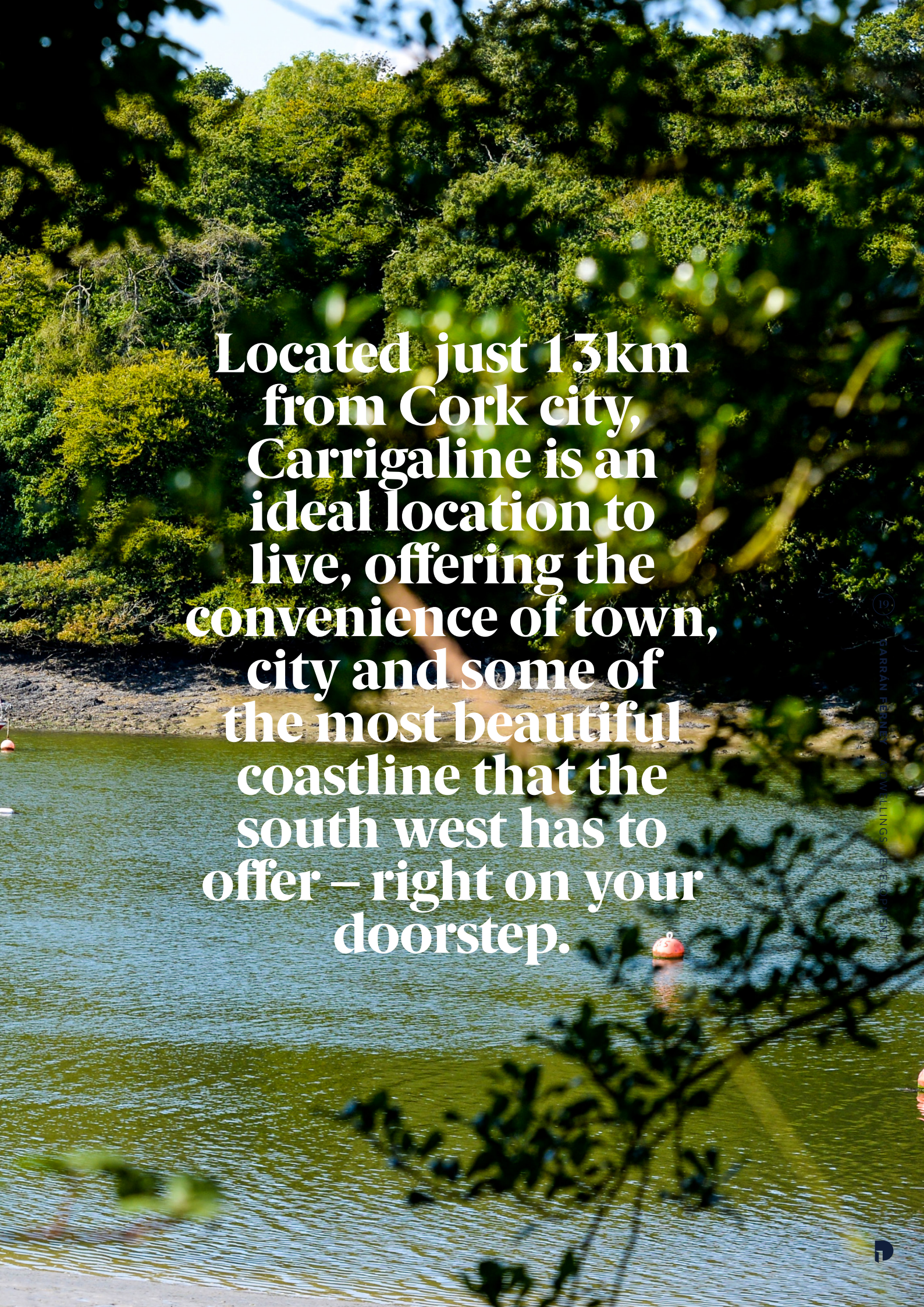












**Located just 13km  
from Cork city,  
Carrigaline is an  
ideal location to  
live, offering the  
convenience of town,  
city and some of  
the most beautiful  
coastline that the  
south west has to  
offer – right on your  
doorstep.**

# There's something for everyone in Carrigaline...

Carrigaline has become a much sought-after commuter town to live in. With a great sense of community, it retains the feel of a small town but with a choice of amenities that rivals any major town.



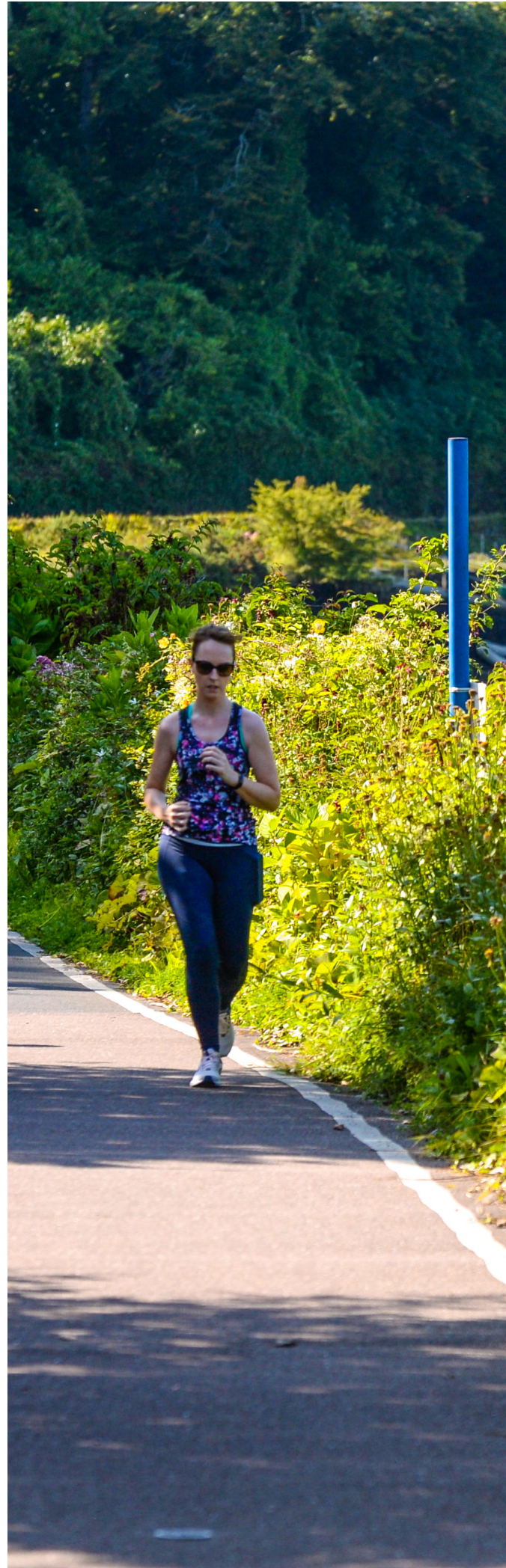


**A spectacular coastal drive, that takes in Crosshaven Myrtleville, Fountainstown Beach and Kinsale, offers you coastal walks, sandy beaches, a bit of surfing and great food along the way.**

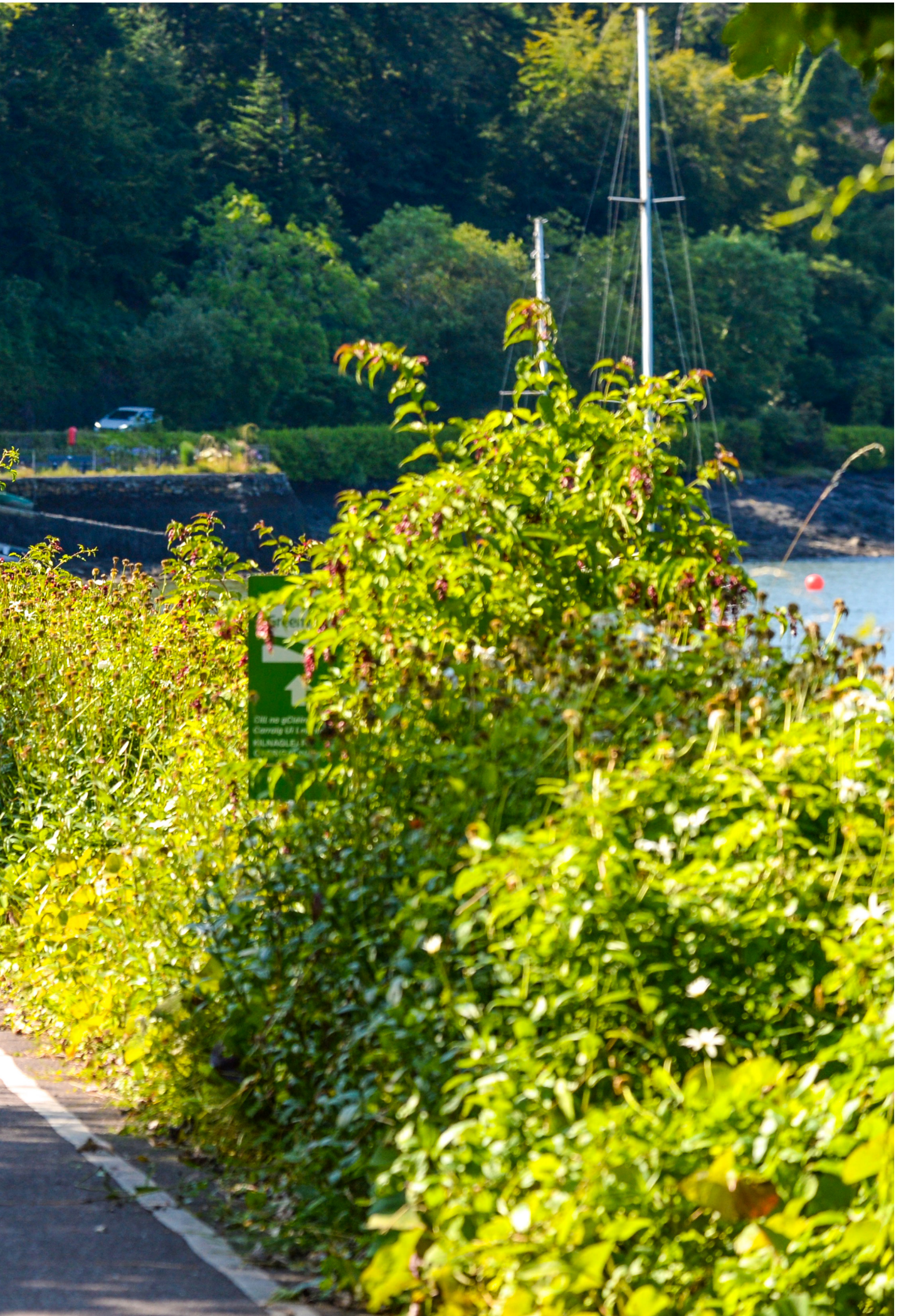




**Stroll, jog or cycle  
along the Greenway  
between Carrigaline and  
Crosshaven for several  
miles on a stunning  
pedestrian walk, stopping  
off at the beautiful Drakes  
Pool along the way for a  
light picnic.**







**The new Carrigaline Education Campus, the biggest non third-level campus in Cork, catering for the educational needs of more than 1,000 primary, secondary and special needs pupils, is home to three schools: Gaelcholáiste Charraig Uí Leighin, Gaelscoil Charraig Uí Leighin and Scoil Sonas.**





Carrigaline is well catered for in terms of pre-school, Gaelscoil, primary and secondary schools and adult education services – reflecting the diversity of a growing community.

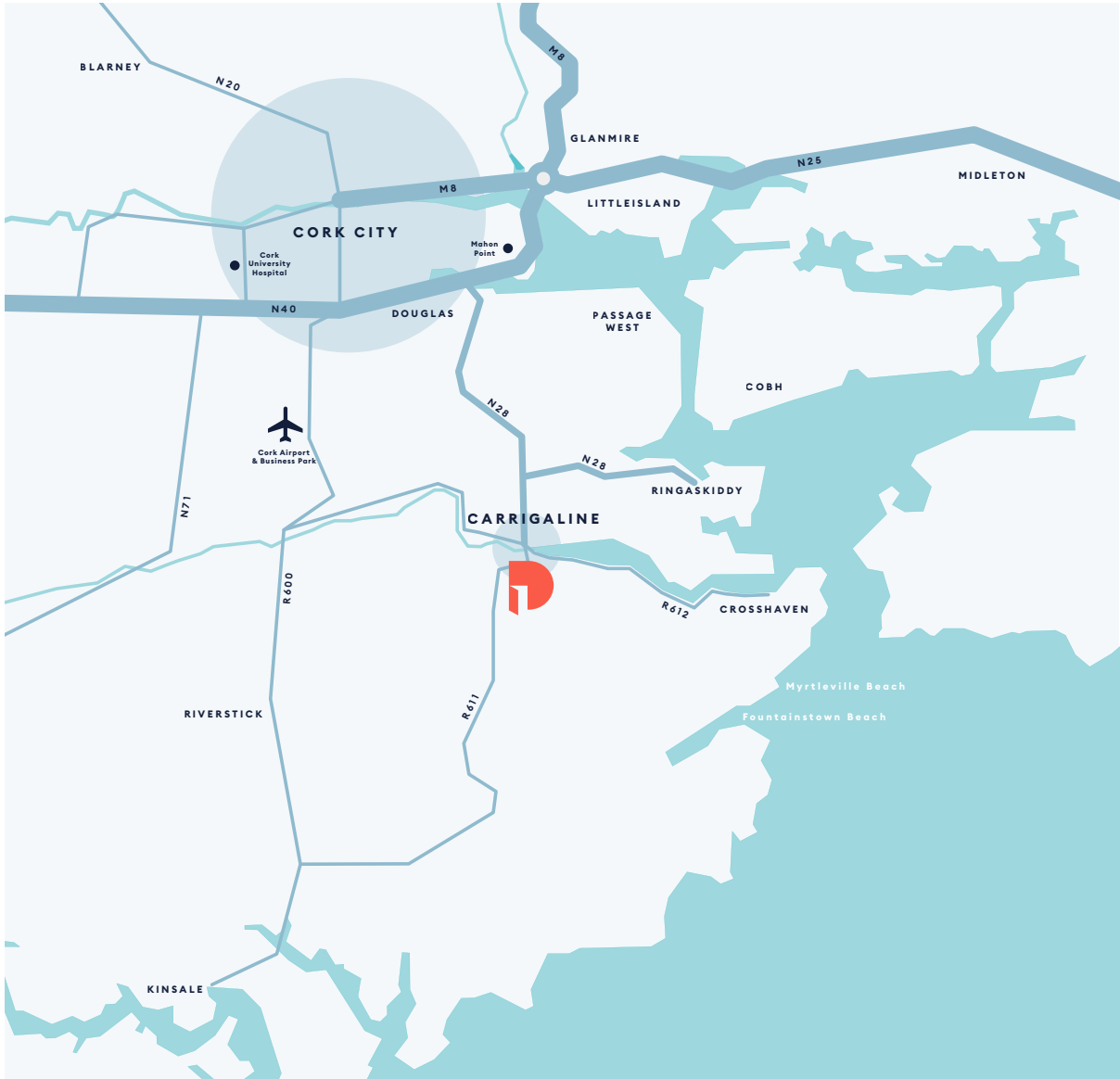
Carrigaline is also within reach of UCC, CIT and other third level institutions in Cork city, thanks to the local bus service.



**Whether it's skateboarding,  
kayaking, sailing, football,  
camogie, junior league soccer,  
golf, tennis, basketball or even  
horse riding – there truly is  
something for everyone.**

The Carrigaline Community Playground, park and Skatepark  
is at the very heart of the community





# Well Connected

City centre	Cork Airport	Cork University Hospital	Mahon Point	Ringaskiddy Port Terminal
25 minutes	16 minutes	22 minutes	17 minutes	12 minutes

Off-peak times (Source: Google Maps)



# Specifications & Finishes

## BER RATING

A2 N.Z.E.B. BER Rated.  
Air to water heat pump system with underfloor heating to ground floor and radiators to the upper floors.  
High quality insulated timber frame.

## EXTERNAL FINISHES

Finish to the front elevation is brick and Napp plaster.  
Reconstituted granite sills to front elevations.  
A black flat tile finish to the roof.  
uPVC fascia, soffit and guttering.

## DOORS & WINDOWS

uPVC double glazed windows and doors.

## INTERNAL FINISHES

Spacious bright living areas.  
High level ceilings to ground and first floor.  
Solid timber staircase with hardwood handrail.  
Quality interior joinery to include oak internal doors and contemporary skirting and architraves.

## KITCHEN/UTILITY

Two tone fitted kitchens.  
Separate utility area.

## BATHROOM/ENSUITE

All bathrooms and ensuite rooms fitted with high-quality sanitaryware.  
Chrome towel rails in main bathroom and ensuite.  
Mixer handset fitted in main bathroom.  
Shower doors fitted in ensuite.  
Pump showers in Master ensuite.  
Electric Shower in Bedroom 1 ensuite.  
Attractively chosen tiles on all bathroom floors and wet areas.

## ELECTRICAL

Electrical specifications as per standard unit.  
House wired for intruder alarm system.

## GARDENS

High quality paving to the front driveways.  
Gardens landscape levelled and seeded.  
Outdoor tap fitted to rear gardens.

## GUARANTEES

10-year Global Homes Warranty Structural Guarantee.  
Latent Defects Insurance and Mechanical & Electrical Inherent Defects Insurance.  
Approved for the Help to Buy Scheme.









Not to scale. Floor plans, room areas and dimensions are indicative only and subject to change.  
In line with our policy of continuous improvement we reserve the right to alter the layout,  
building style, landscaping, and specifications at anytime without notice.



# Site Plan

## HOUSE TYPES

**Type A**  
4 Bed Semi-Detached  
c. 144 sq.m

**Type A1**  
4 Bed Detached  
c. 144 sq.m

**Type B1**  
3 Bed End-Terrace  
c. 115 sq.m

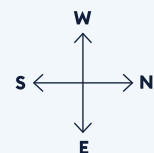
**Type B2**  
3 Bed Mid-Terrace  
c. 108 sq.m

**Type B3**  
3 Bed End-Terrace  
c. 125 sq.m

**Type C1**  
3 Bed End-Terrace  
c. 115 sq.m

**Type C2**  
3 Bed Mid-Terrace  
c. 108 sq.m

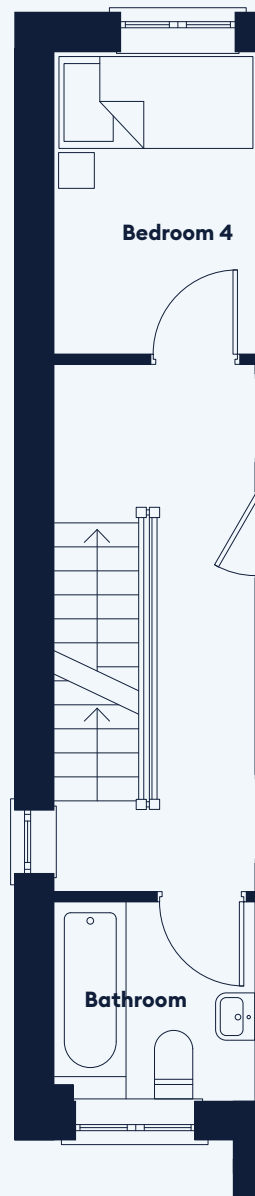
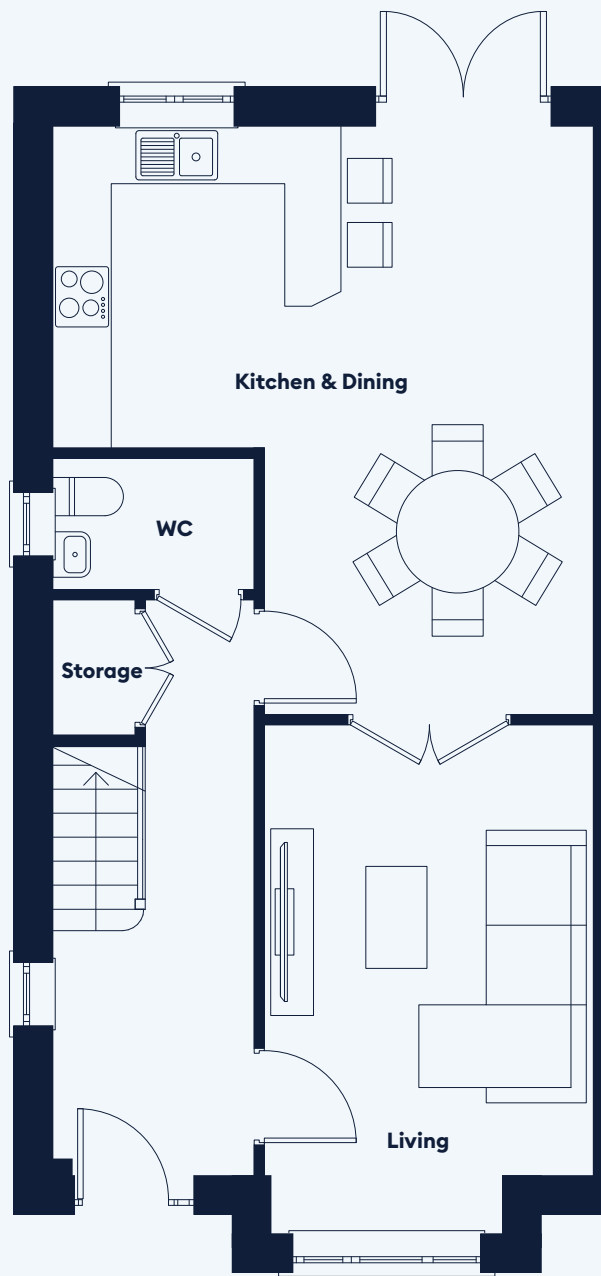
**Type D**  
3 Bed Semi-Detached  
c. 112 sq.m



# Type A

4 BED  
SEMI-DETACHED

c. 144 sq.m / 1,550 sq.ft

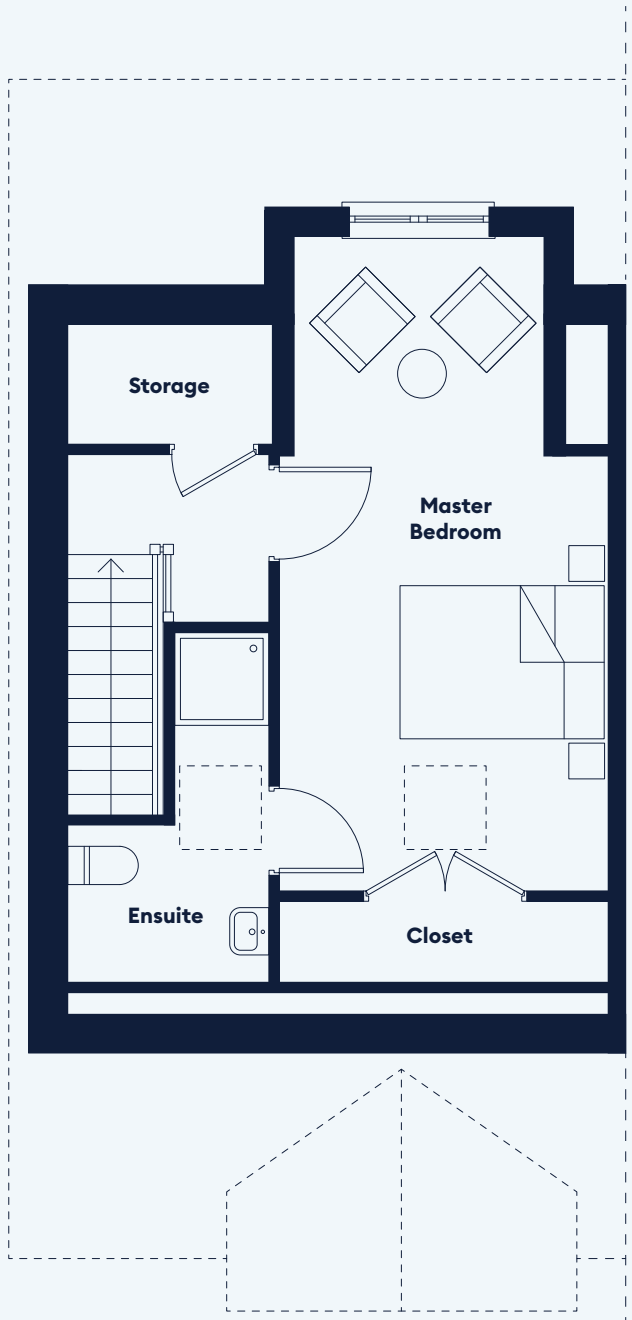


GROUND FLOOR





FIRST FLOOR



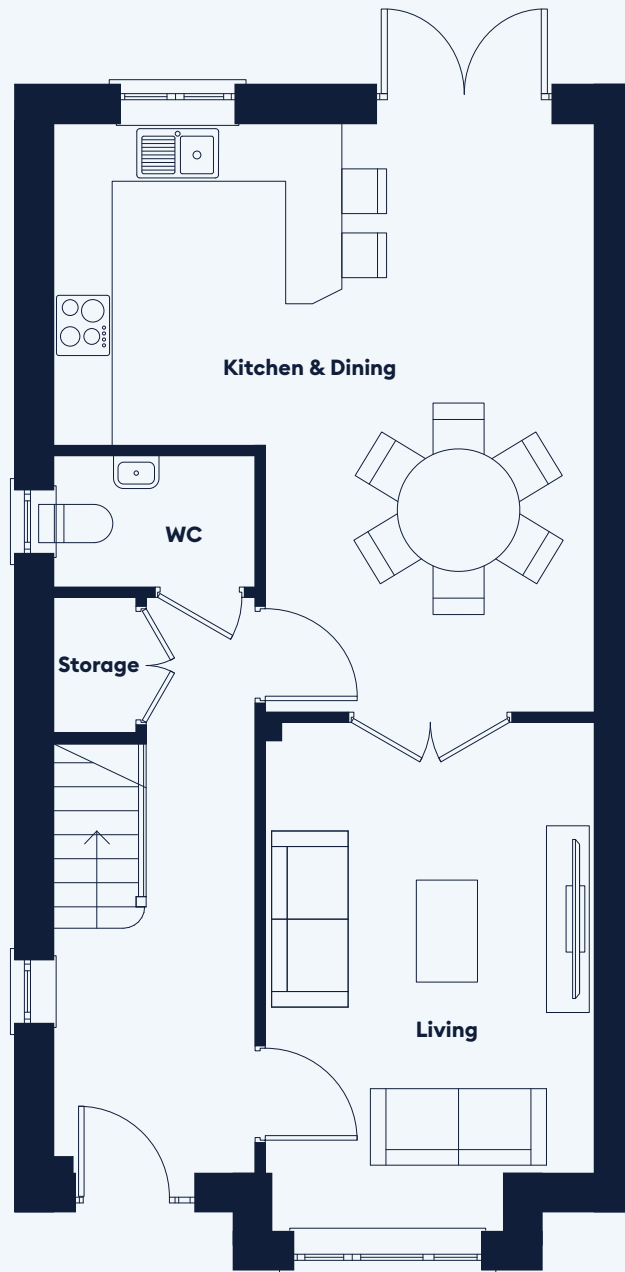
ATTIC



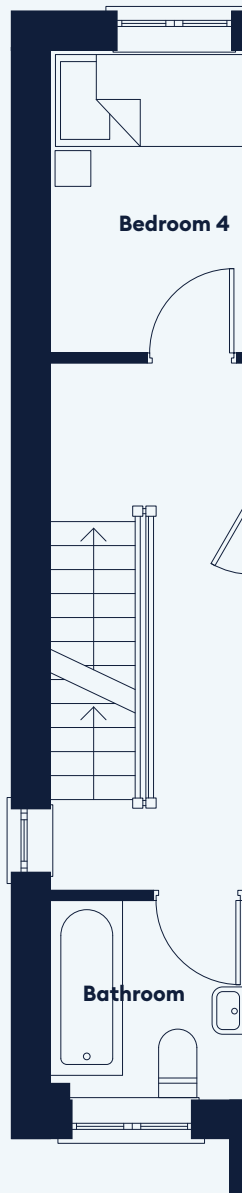
# Type A1

4 BED  
DETACHED

c. 144 sq.m / 1,550 sq.ft

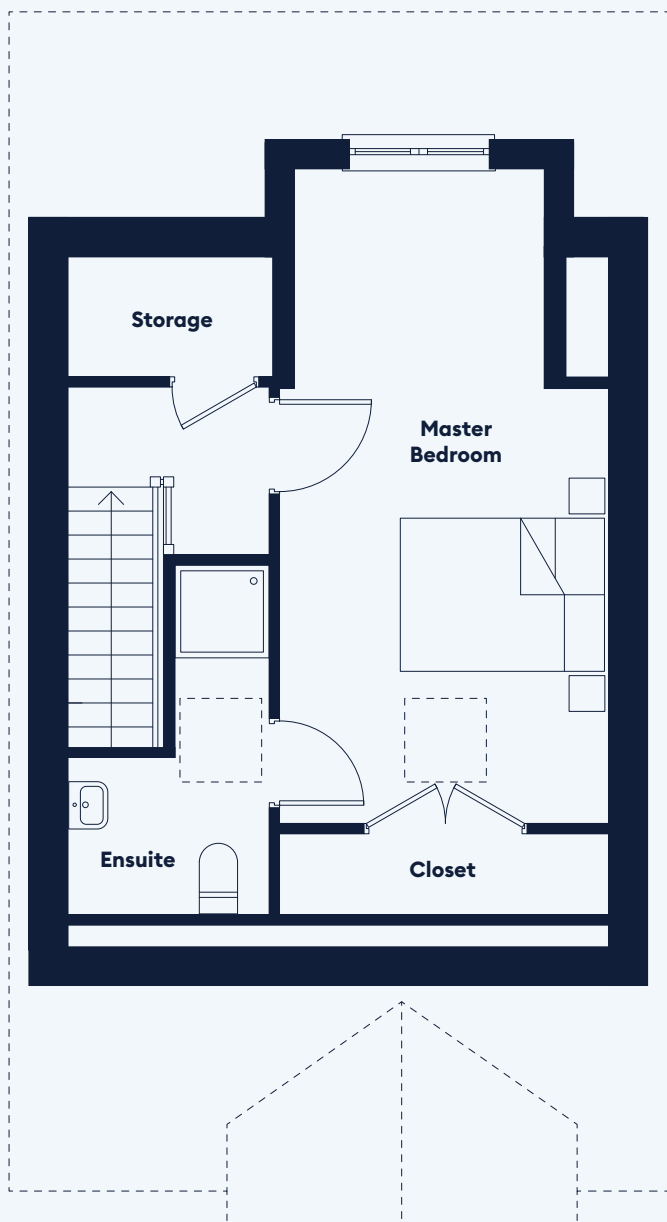


GROUND FLOOR





FIRST FLOOR



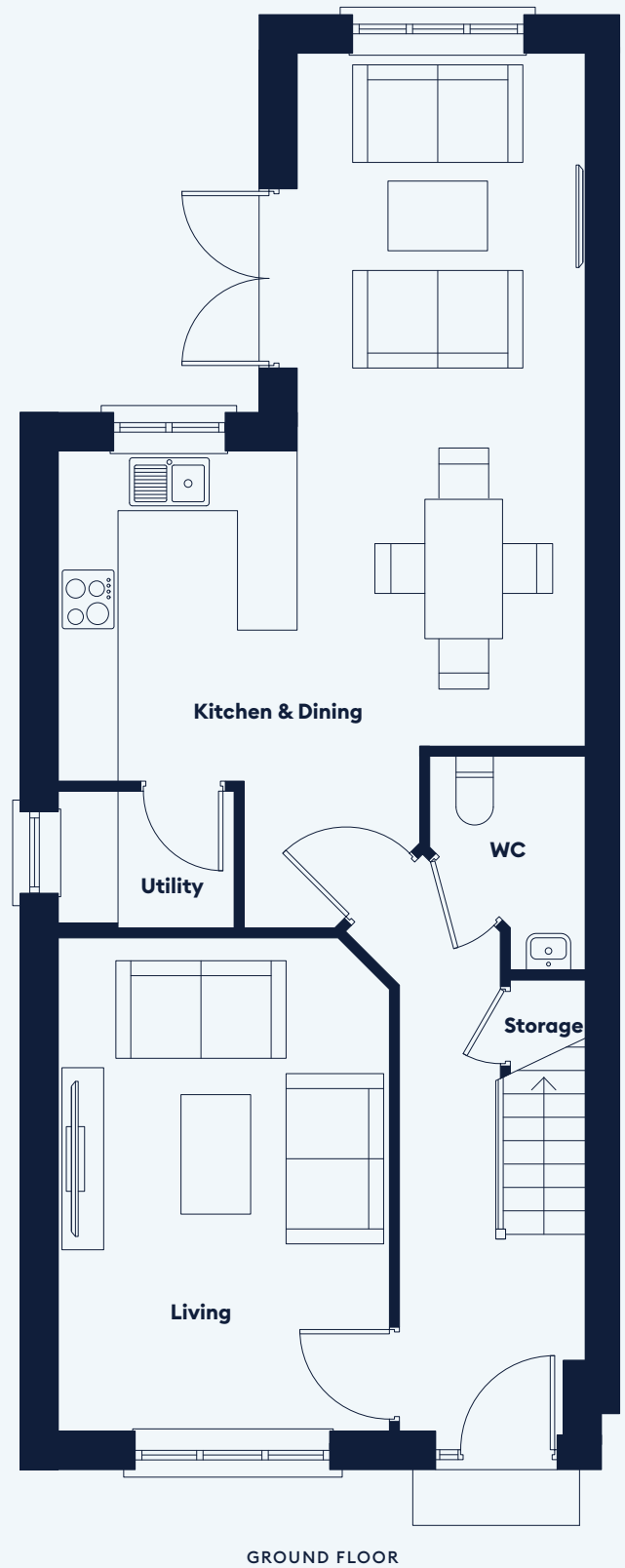
ATTIC



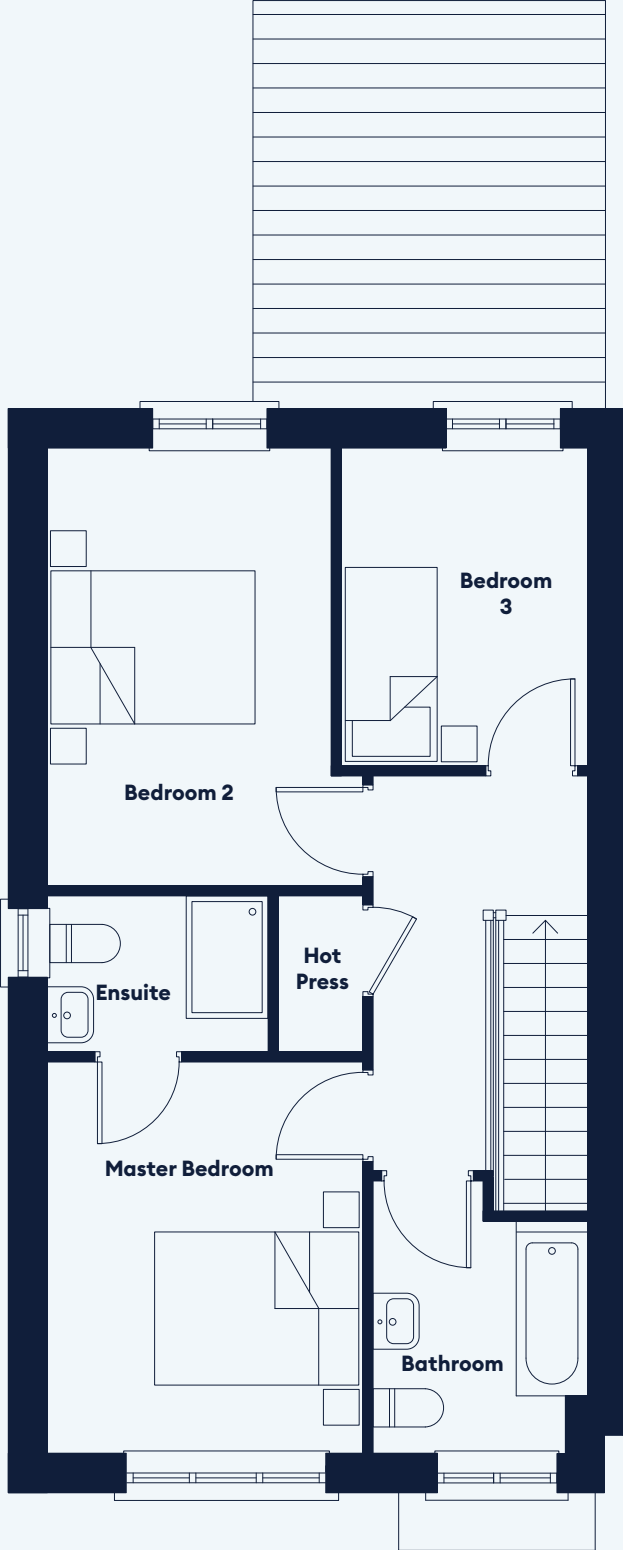
# Type B1

3 BED  
END-TERRACE

c. 115 sq.m / 1,237 sq.ft







FIRST FLOOR

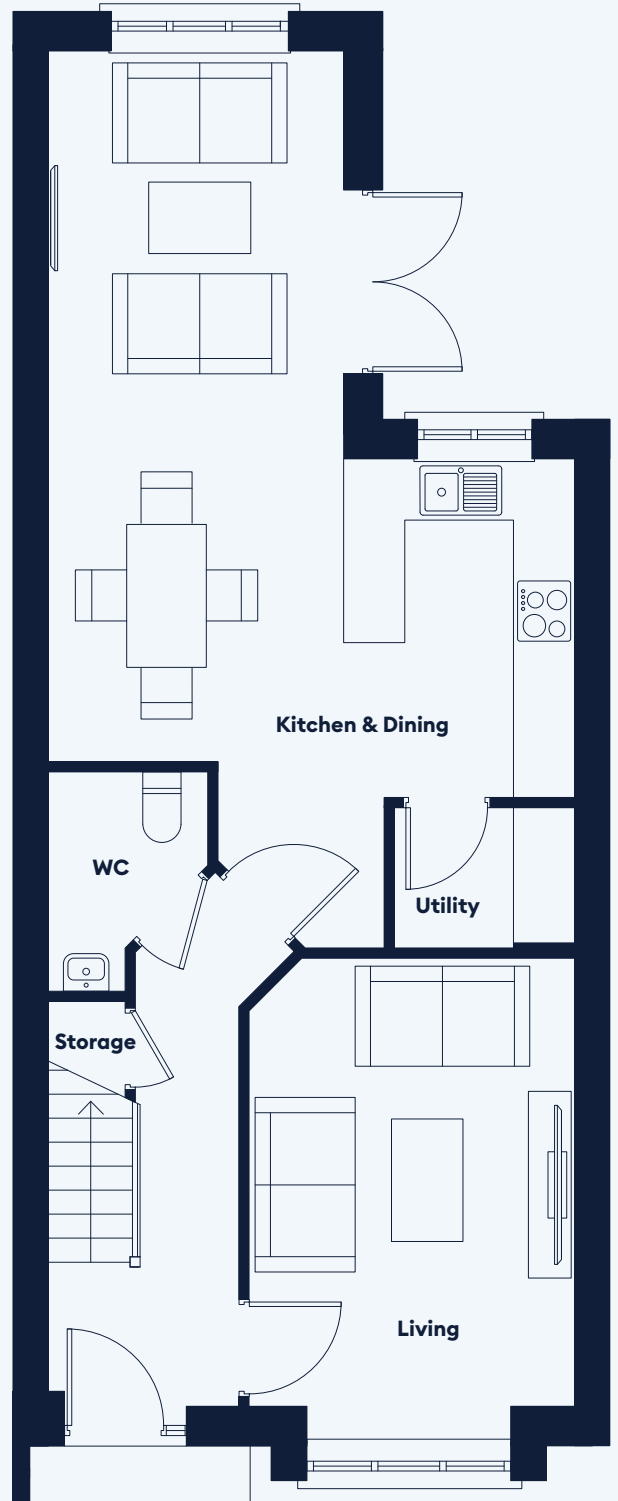
# Type B2

3 BED  
MID-TERRACE

c. 108 sq.m / 1,162 sq.ft



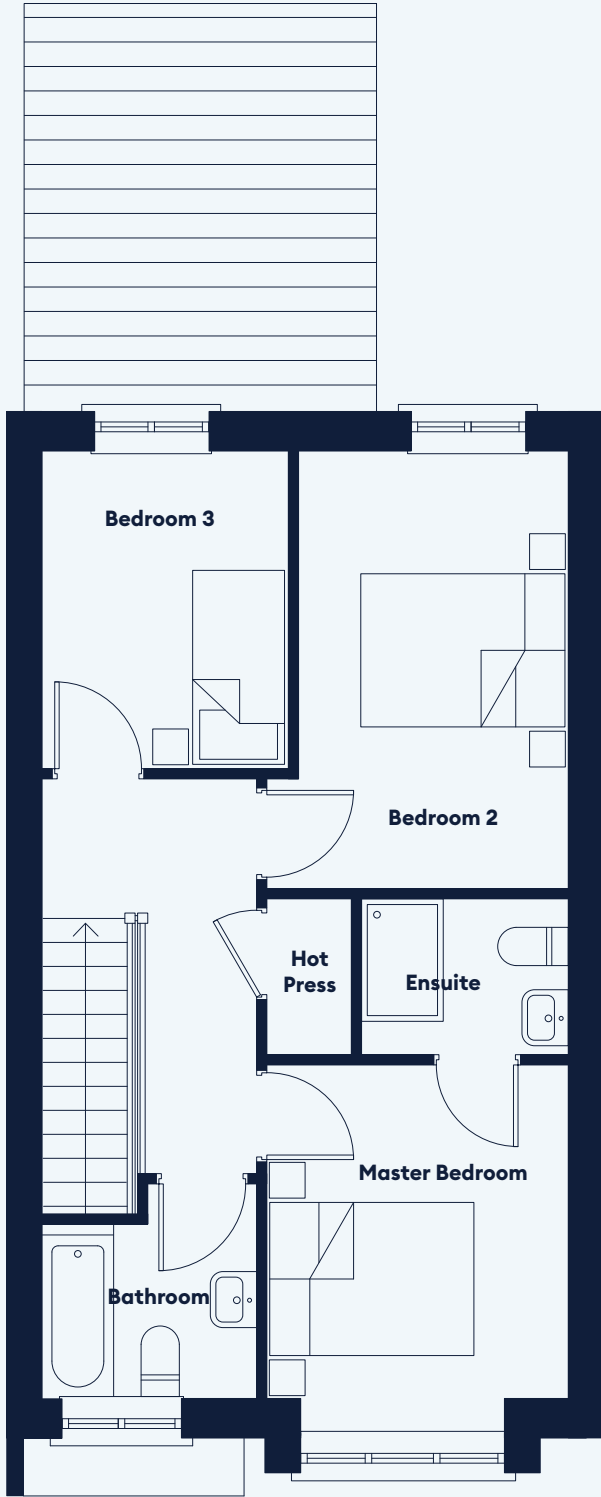
GARRÁN FERNEY A DWELLINGS DEVELOPMENT



GROUND FLOOR

Not to scale. Floor plans, room areas and dimensions are indicative only and subject to change. In line with our policy of continuous improvement we reserve the right to alter the layout, building style, landscaping, and specifications at anytime without notice.





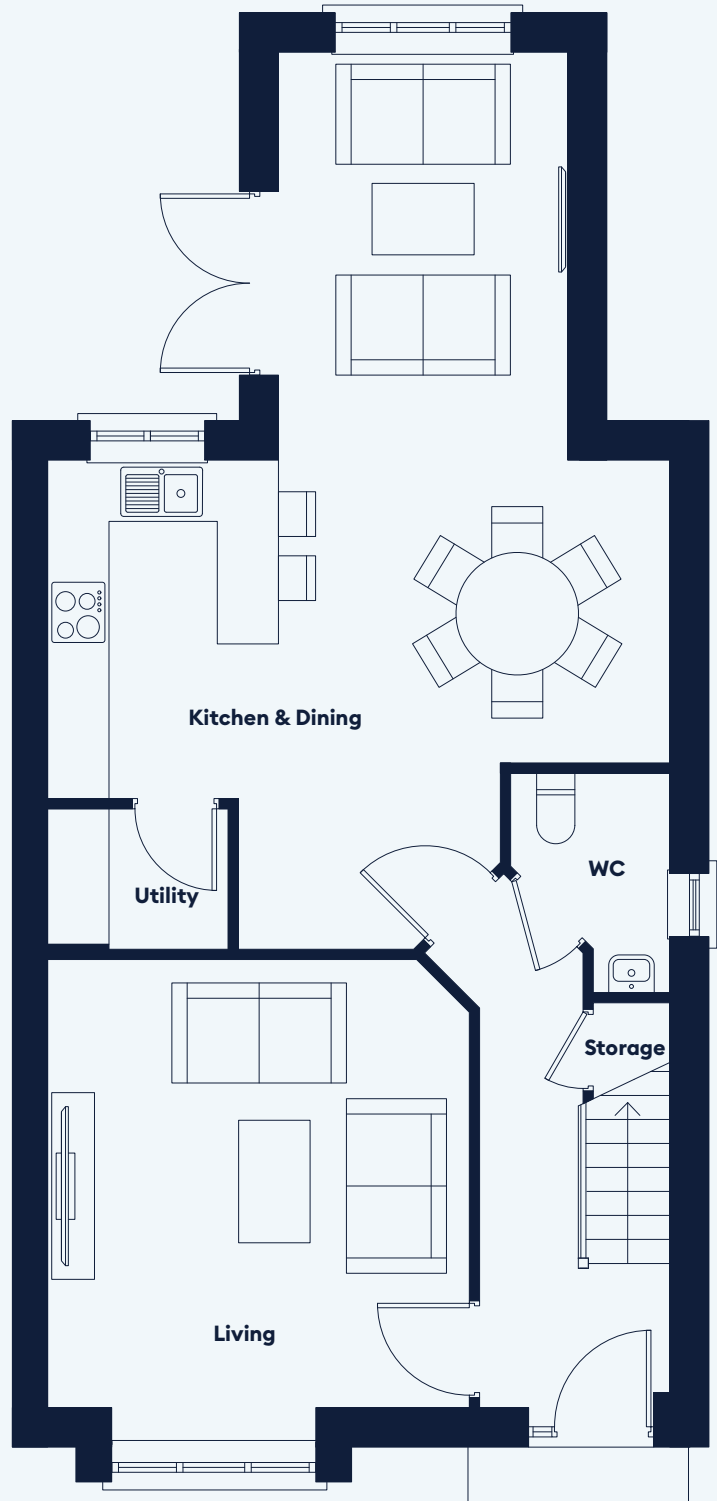
FIRST FLOOR



# Type B3

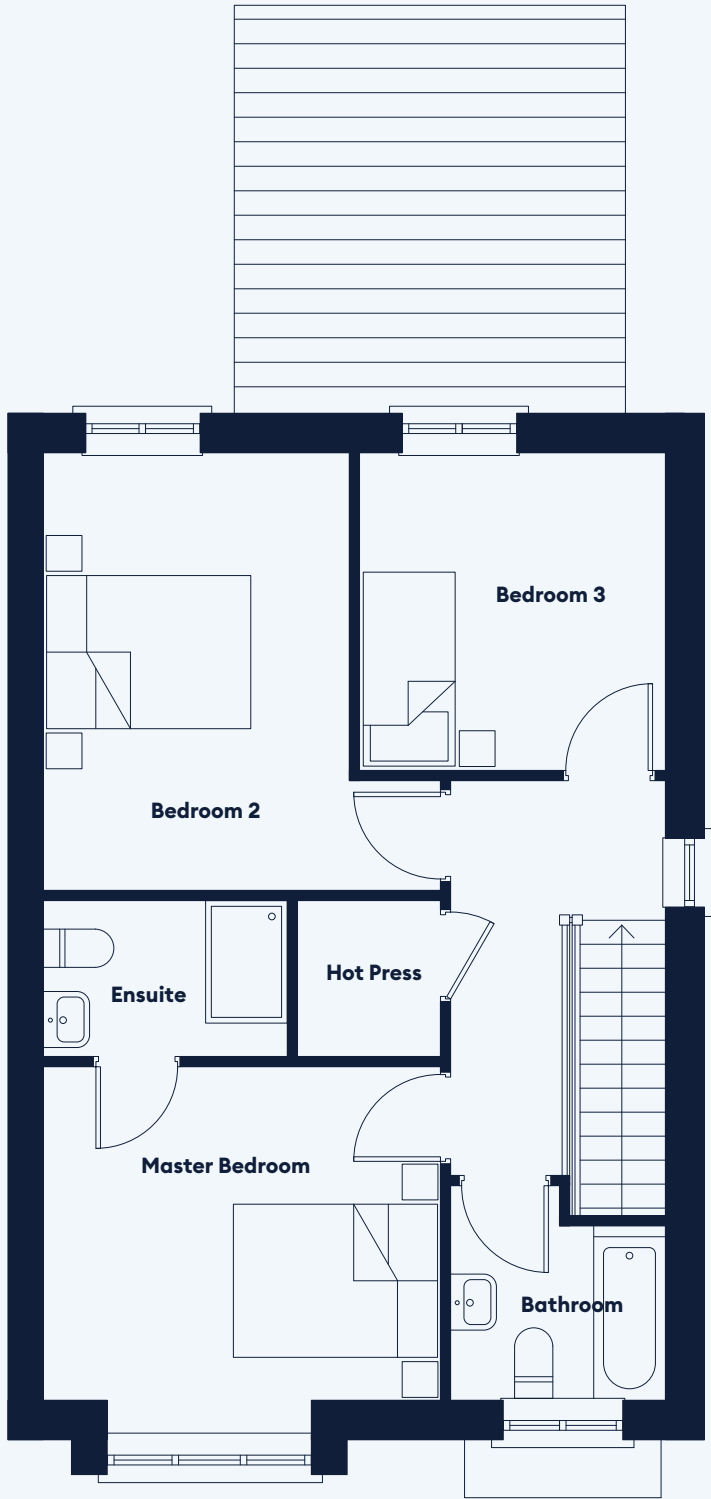
3 BED  
END-TERRACE

c. 125 sq.m / 1,345 sq.ft



GROUND FLOOR

Not to scale. Floor plans, room areas and dimensions are indicative only and subject to change. In line with our policy of continuous improvement we reserve the right to alter the layout, building style, landscaping, and specifications at anytime without notice.

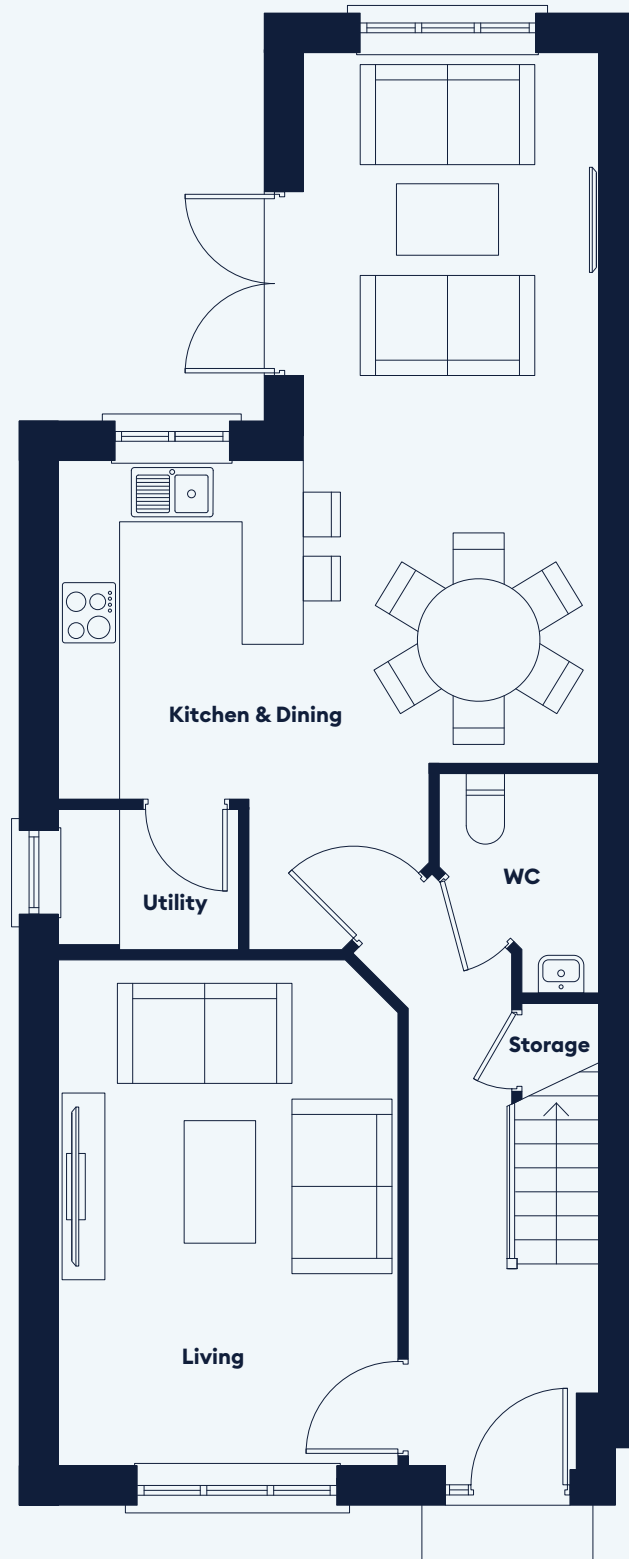


FIRST FLOOR

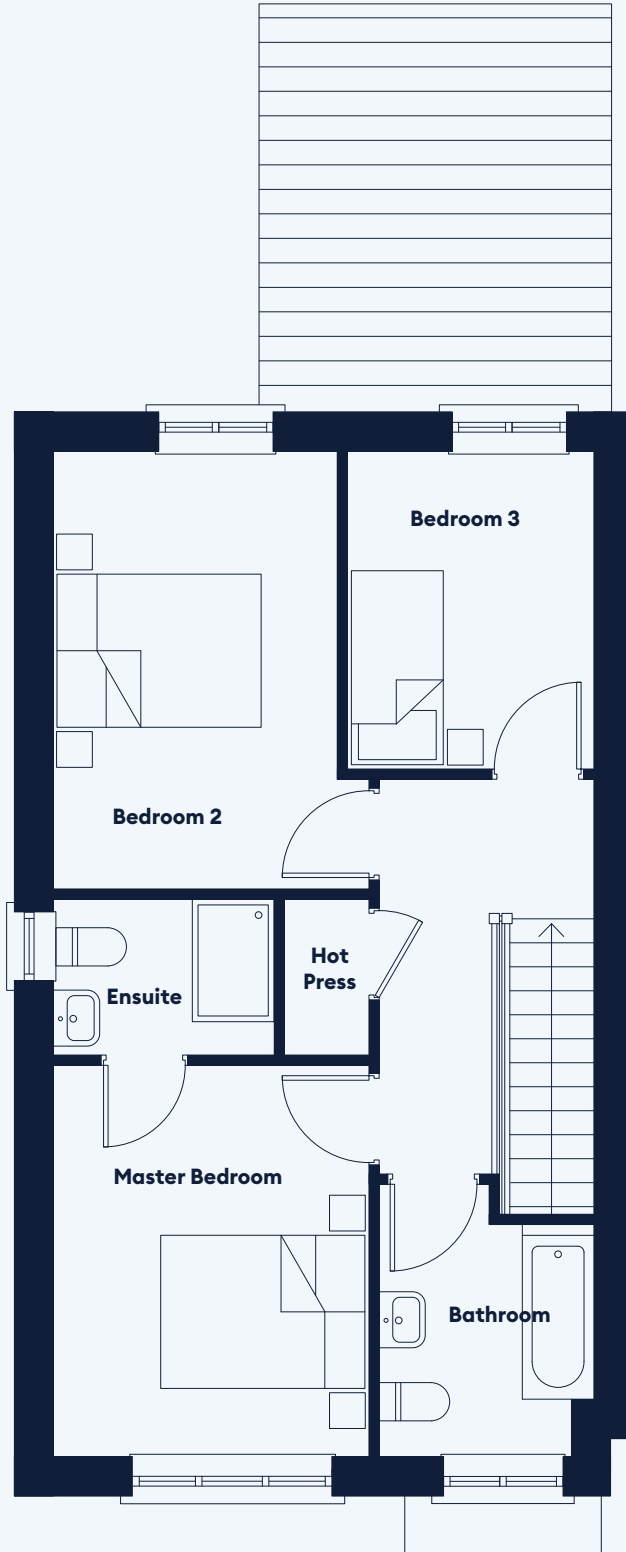
# Type C1

3 BED  
END-TERRACE

c. 115 sq.m / 1,237 sq.ft



GROUND FLOOR

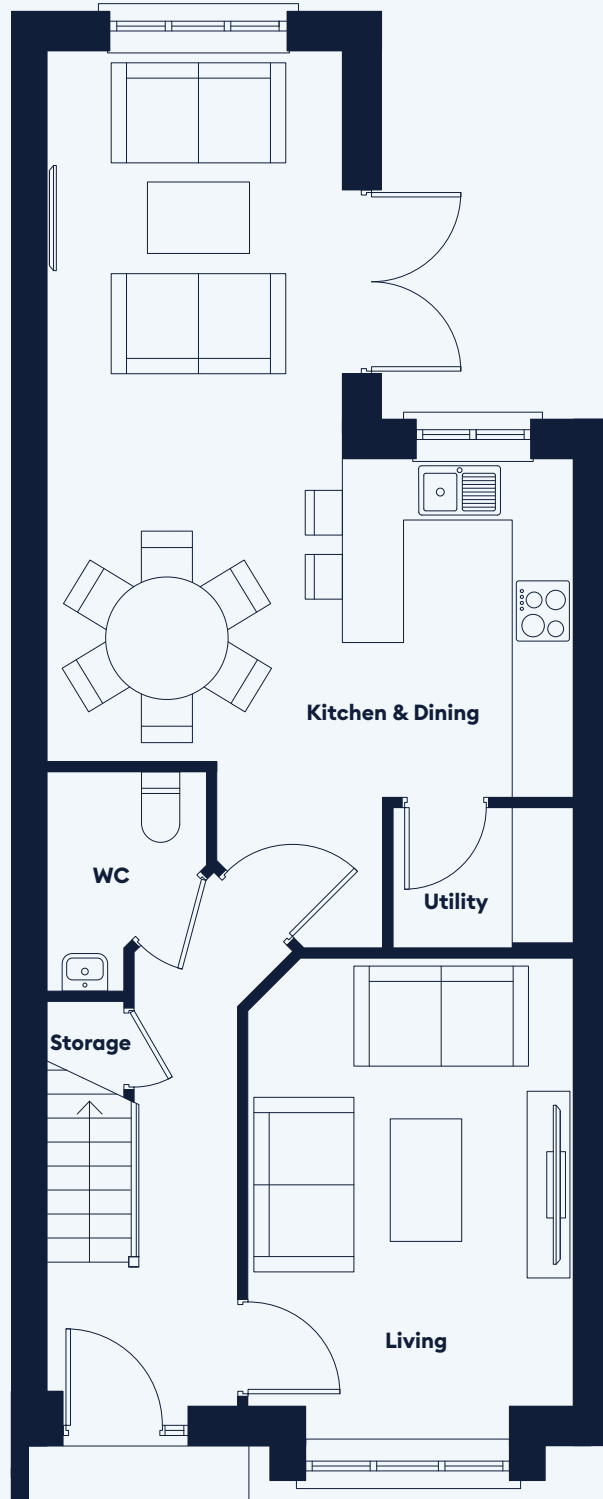


FIRST FLOOR

# Type C2

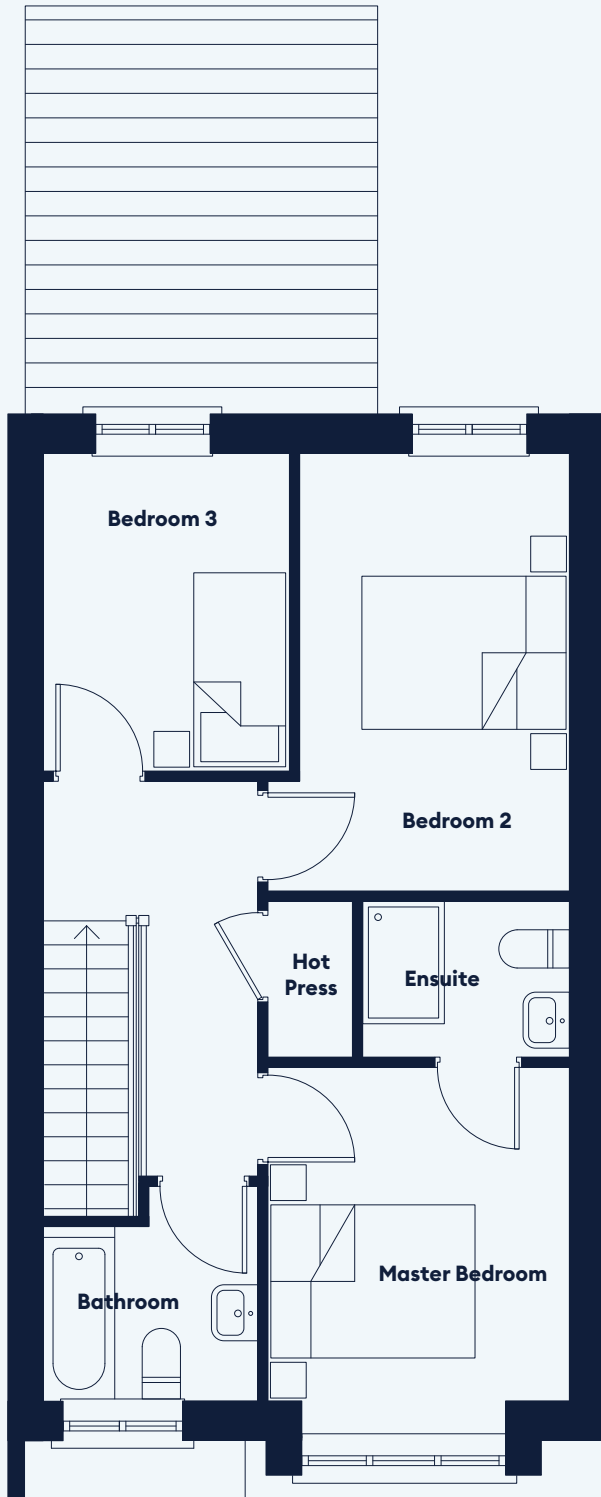
3 BED  
MID-TERRACE

c. 108 sq.m / 1,162 sq.ft



GROUND FLOOR



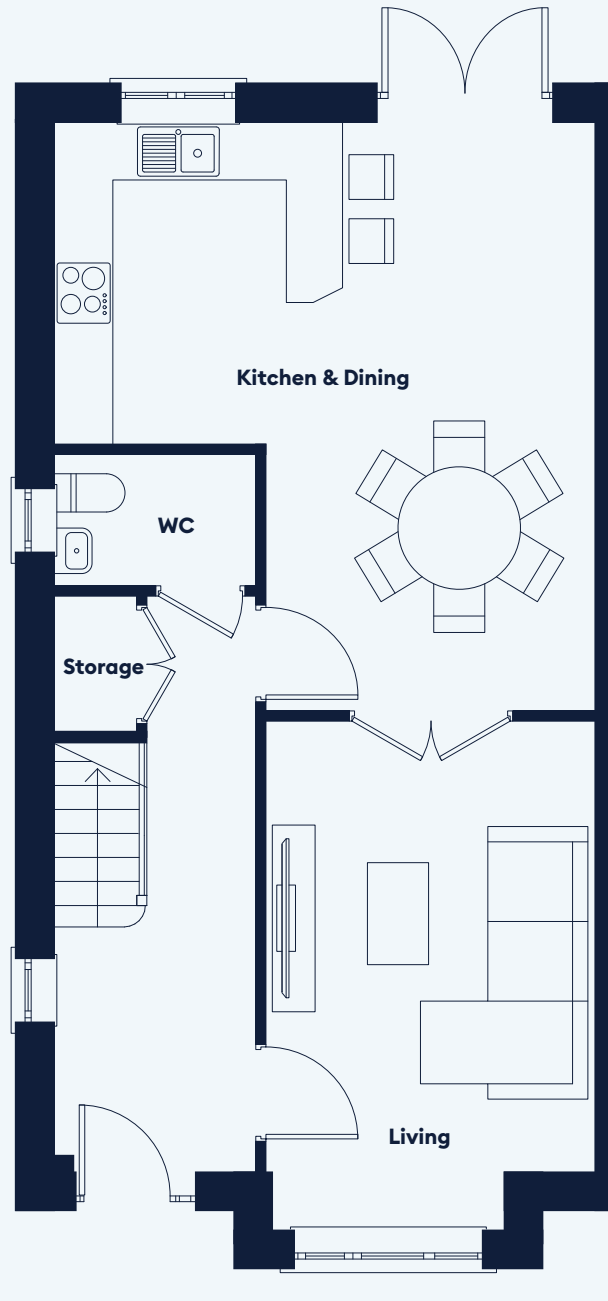


FIRST FLOOR

# Type D

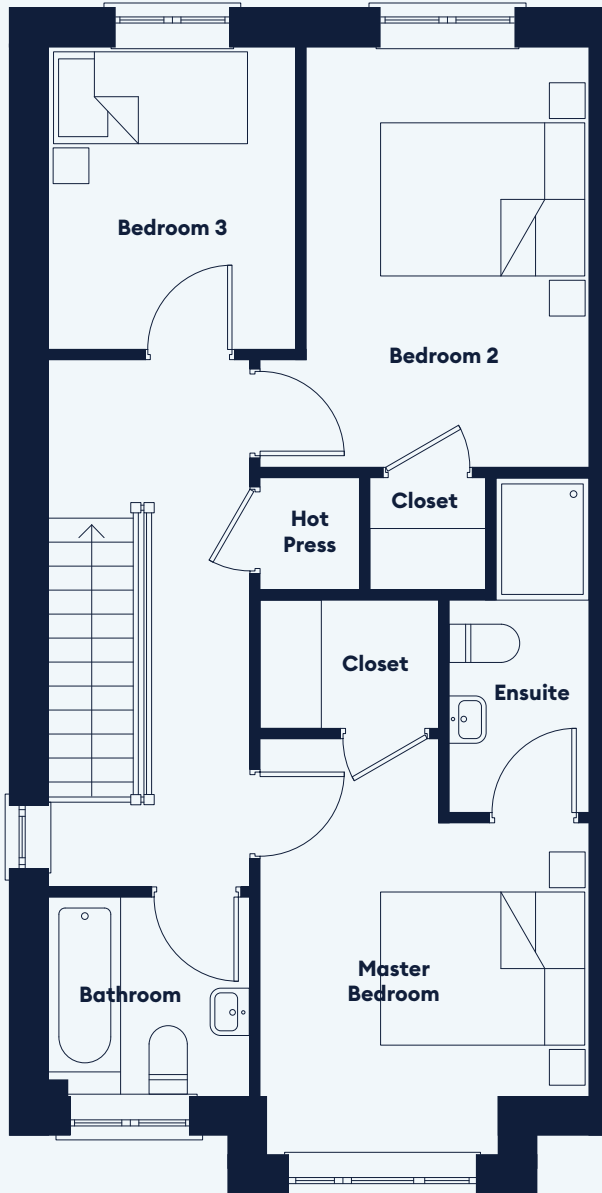
3 BED  
SEMI-DETACHED

c. 112 sq.m / 1,205 sq.ft



GROUND FLOOR





FIRST FLOOR

A DEVELOPMENT BY



[WWW.DWELLINGS.IE](http://WWW.DWELLINGS.IE)

REGISTER YOUR INTEREST:

 **DENNEHY**  
AUCTIONEERS

021 437 1249  
[info@dennehyauctioneers.ie](mailto:info@dennehyauctioneers.ie)

DISCLAIMER: These particulars and any accompanying documentation are set out as a general outline only, and do not constitute any part of an offer and are issued strictly on that basis. Measurements are approximate, and drawings, maps and plans are not drawn to scale. All contents are general outlines for the guidance of intending purchasers only. The builder reserves the right to make alterations to the design, specification and layout.